

KODAK ACR-2000 System

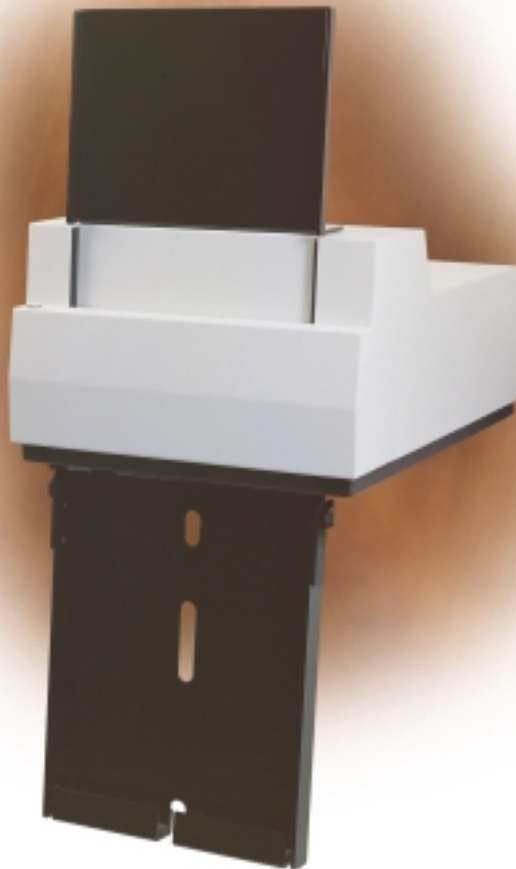
Your simple CR solution

- **Compact tabletop design**
- **Complete software**
- **Acquisition workstation**
- **DICOM compliant**

The Kodak ACR-2000 system is a tabletop computed radiography system for lower-volume imaging environments. Images can be acquired in less than a minute with no film, no chemicals, and no environmental issues.

Compact and easy to use, this complete DICOM image-acquisition system provides the performance and reliability you expect from Kodak, the leader in medical imaging.

The Kodak ACR-2000 system is a cost-effective filmless solution for the hospital, clinic, office, ICU, ER, or mobile imaging service. The ACR-2000 system fits in anywhere. Placed on a cart, it can go anywhere. Increase your efficiency by using it for portables in the morning—and wherever it is needed the rest of the day.



PLUG AND PLAY

This compact system provides a simple, plug-and-play CR solution for integrating x-ray studies into PACS, mini-PACS, teleradiology, centralized reading, image distribution, and archives. Installation and training require less than a day.

The Kodak ACR-2000 system lets the user acquire, process, and send images to DICOM destinations on a Local or Wide Area Network (LAN/WAN). The system consists of a CR phosphor plate reader, plate eraser, image-acquisition workstation, and software.

LEARN MORE

For more information about the Kodak ACR-2000 system, contact your authorized dealer of Kodak products. Or visit www.kodak.com/go/health.



KODAK ACR-2000 System

PRODUCT SPECIFICATIONS

PHOSPHOR PLATE READER:

For use in a darkened room

Dimensions

Width: 21 in. (53.3 cm)

Depth: 27 in. (68.6 cm)

Weight: 85 lb (38.6 kg)

Phosphor Plates Supported

Up to 14 x 17 in. (35 x 43 cm)

Scan Rate

50 seconds/plate

Power

110–120 VAC 1 Amp 50/60 Hz

PLATE ERASER:

Dimensions

Height: 18 in. (45.7 cm)

Width: 30 in. (76.2 cm)

Depth: 5 in. (12.7 cm)

Weight: 20 lb (9.1 kg)

Power

110–120 VAC 1 Amp 50/60 Hz

ACQUISITION WORKSTATION:

Minitower Computer

WINDOWS 2000 Operating System

17-in. monitor, keyboard, and mouse

SOFTWARE:

KODAK General Radiography Software

Preview images

Image processing

Geometric manipulation

DICOM 3.0

Storage Class User

Query/Retrieve Provider

Modality Worklist Service User

Optional Print Service Class User

Compression

Lossless JPEG or Lossy JPEG

Enhanced JPEG (up to 100:1)

Connectivity

Exportable media and network

archiving LAN and WAN interface



REGULATORY

UL, cUL, TUV, CE

510k Clearance

www.kodak.com/go/health

Health Imaging Division
EASTMAN KODAK COMPANY
343 State Street
Rochester, NY 14650-1132
1-800-810-0327

Outside the U.S., please contact your
local Kodak company.

